

Florida Department of Environmental Protection



Office of Coastal and Aquatic Managed Areas

GTM Invasive Plant Task Force



Florida Invasive Species Partnership (FISP)

<http://www.floridainvasives.org/>



Regional Cooperative Invasive Species Management Areas (CISMA)

First Coast Invasive Species Working Group



GTM Invasive Plant Task Force



Think Locally, Act Neighborly
Invasive exotic species know no boundaries!

www.floridainvasives.org



Research

- Mapping and monitoring component
- Compile and share data
- Use data to augment public mapping systems i.e. FNAI and EDDMapS

Resource Management

- Control component, actively working in the watershed
- Using information from Research to prioritize worksites
- Point of contact for the public looking for help controlling invasives
- Management of volunteer workforce
- Work with private and public land management partners

Volunteer

- Help with management of volunteer workforce program
- Tie Task Force into our current, strong volunteer core

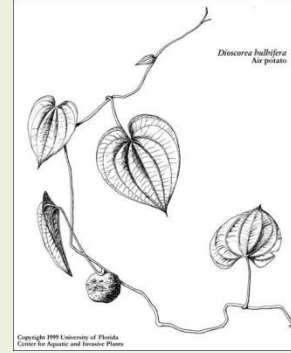
Education

- Coordinate the general business of the task force
- Provide educational opportunities for public and professional sectors
- Work with private and public land management partners

**I'm a
Pepper Buster!**



"Wouldn't you like to bust a pepper too?"



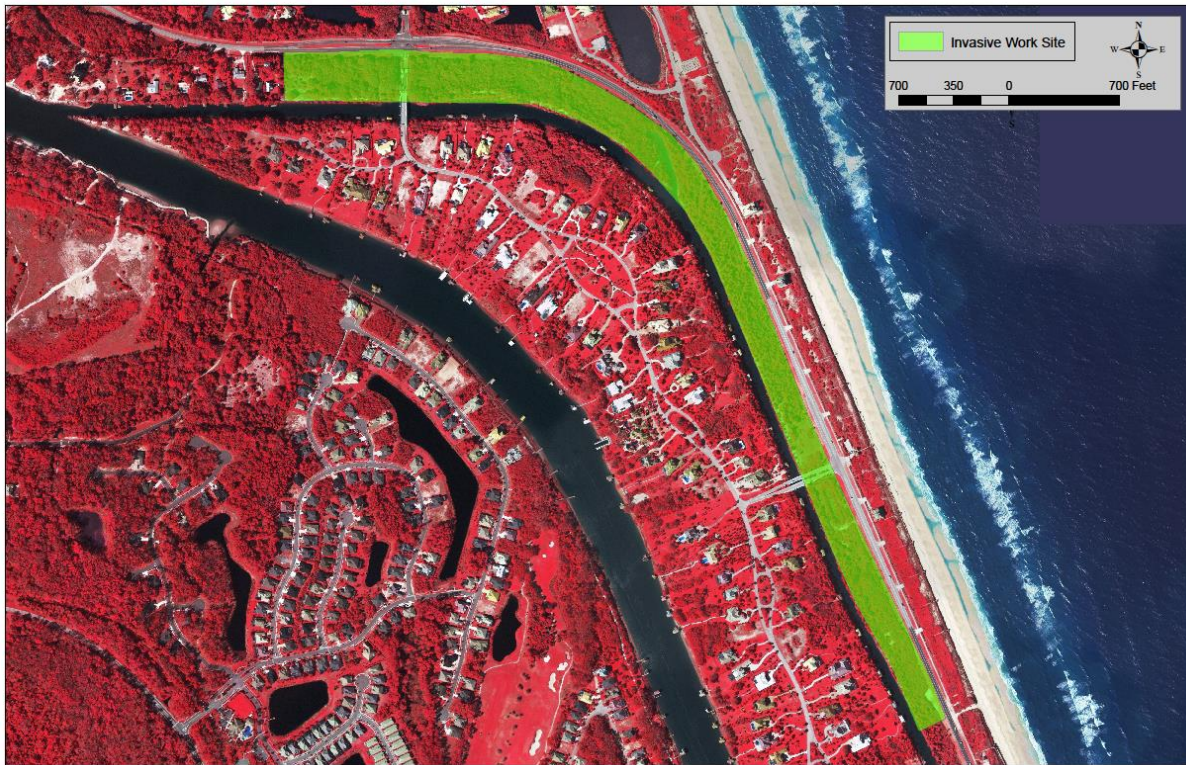
Private Partnership: Condo Associations

- Began with 3 Condo Associations in St. Augustine Beach adjacent to Dondanville rd.
- With their participation and the help of volunteers from many organizations we removed large infestations of *Schinus terebinthifolius* (Brazilian pepper).
- Native vegetation is returning.



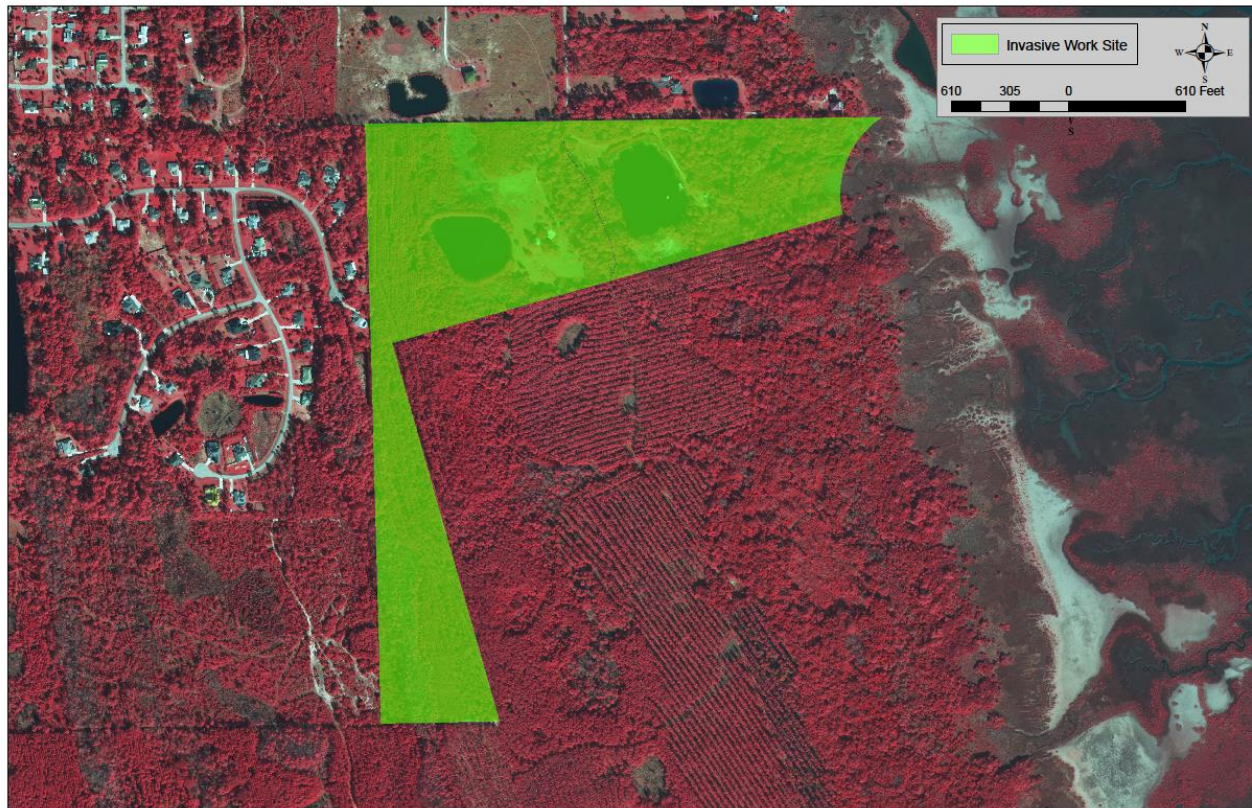
Public/ Private Partnership: Homeowners Association and Local Government

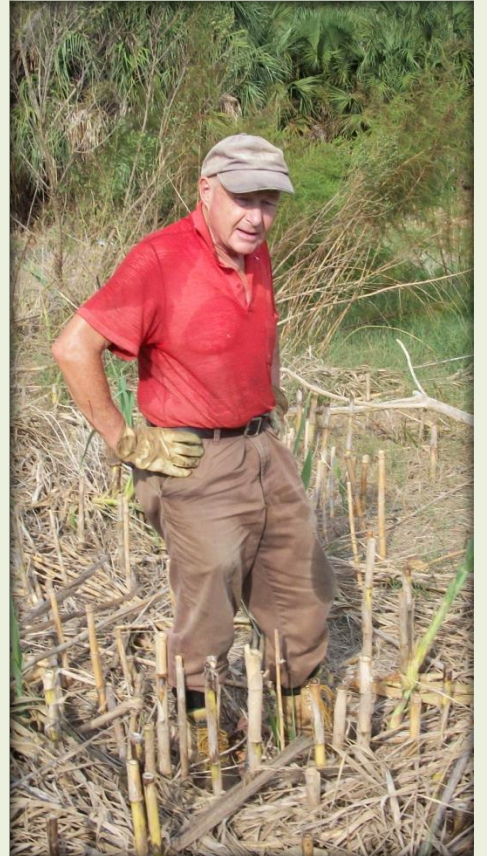
- The Task Force partnered with the Island Estates Homeowners and Flagler County to remove *Schinus terebinthifolius* (Brazilian pepper) from a 1.5 mile stretch of A1A.



Public/ Private Partnership: Private Landowner & Public Agency

- The Task Force partnered with the Florida Forestry Service and two private landowners to implement control of *Triadica sebifera* (Chinese tallow) and *Dioscorea bulbifera* (air potato) on properties adjacent to the Matanzas State Forest.





- We all have a part to play
- Learn about the ecosystem near you
- Remove invasives
- Don't plant them

And.....

- Replace with natives

