



GTM Sentinel Site Application Module 1 Project Update

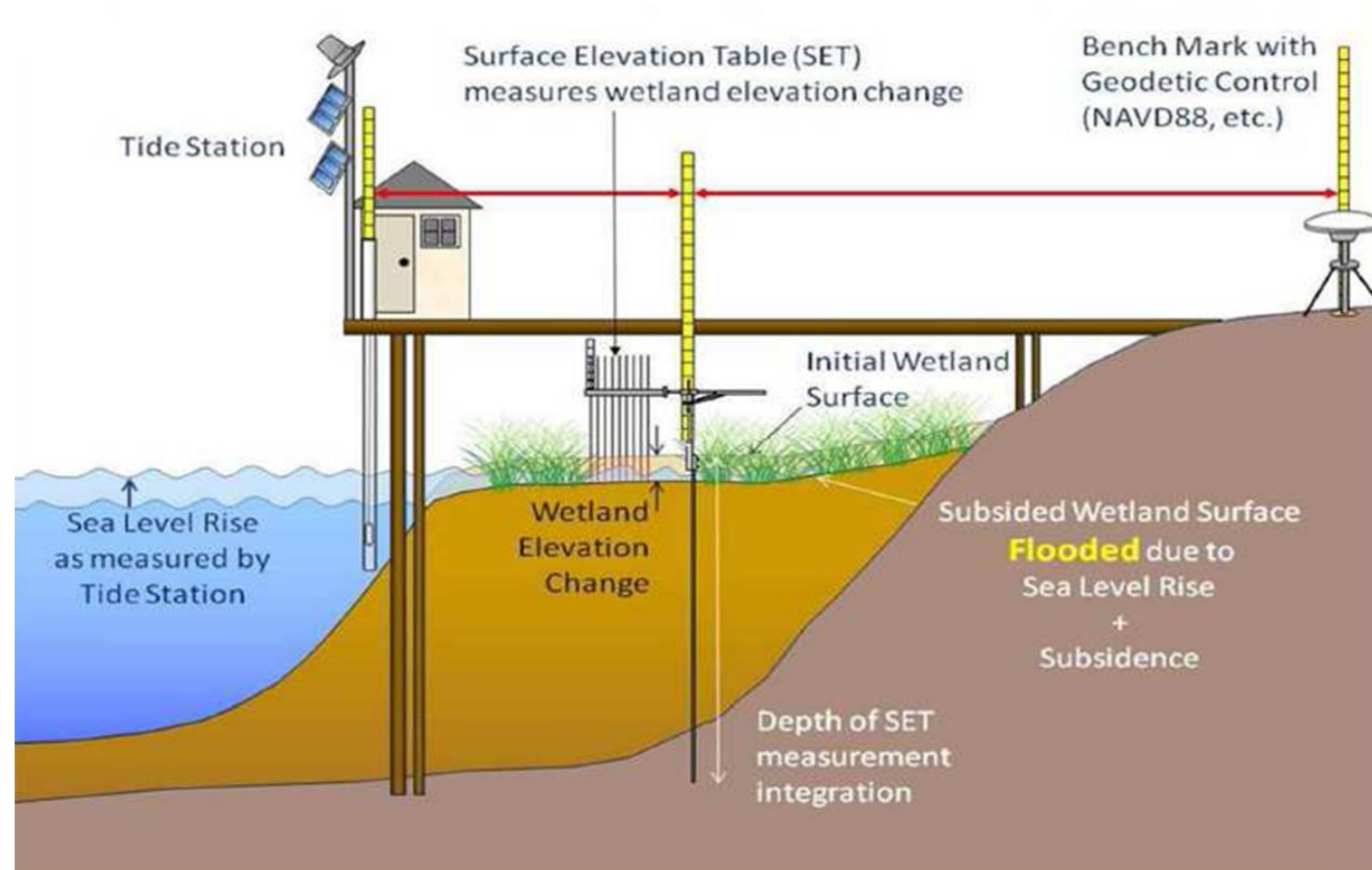
**Pam Marcum, Head Biologist
GTM Research Reserve**





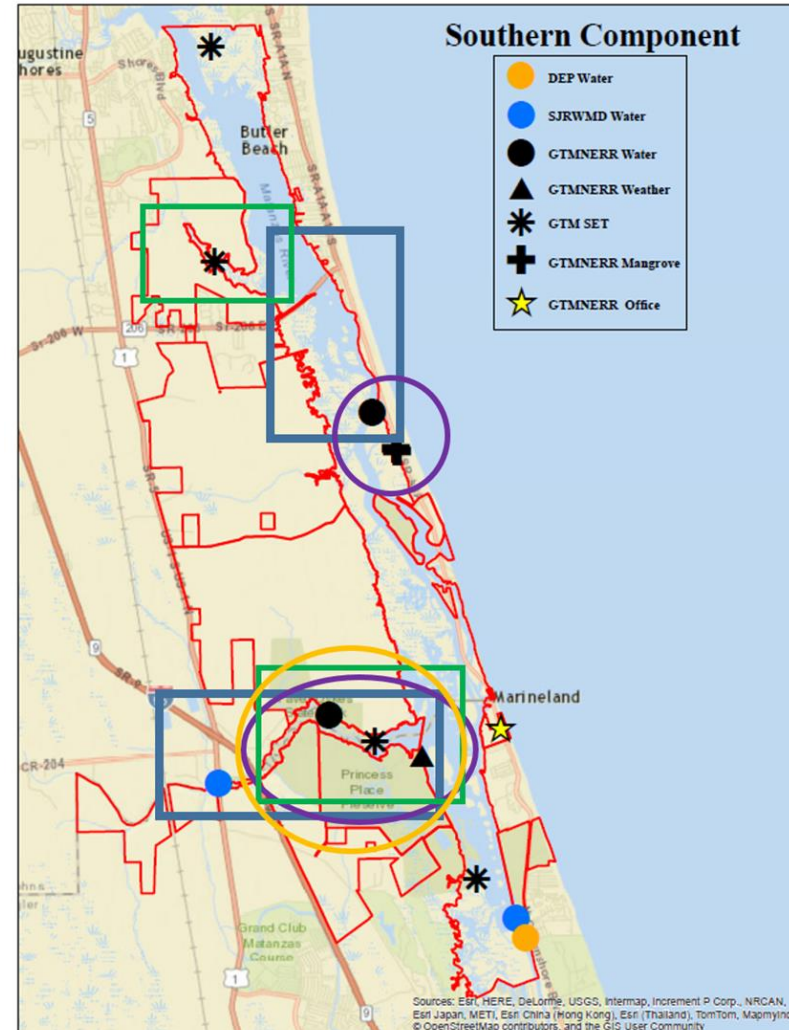
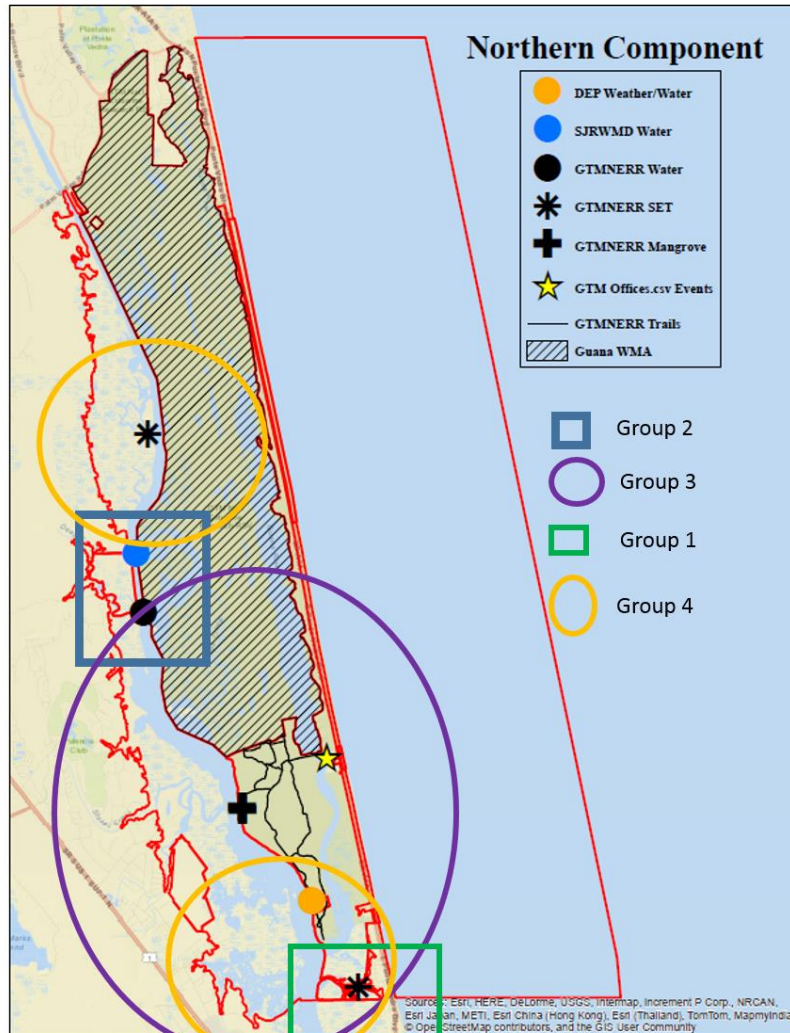
Coastal Habitat Responses to Changing Water Levels

1. Wetland vegetation
2. Surface elevation
3. Water level
4. Vertical control



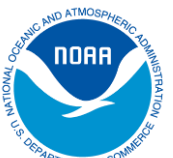
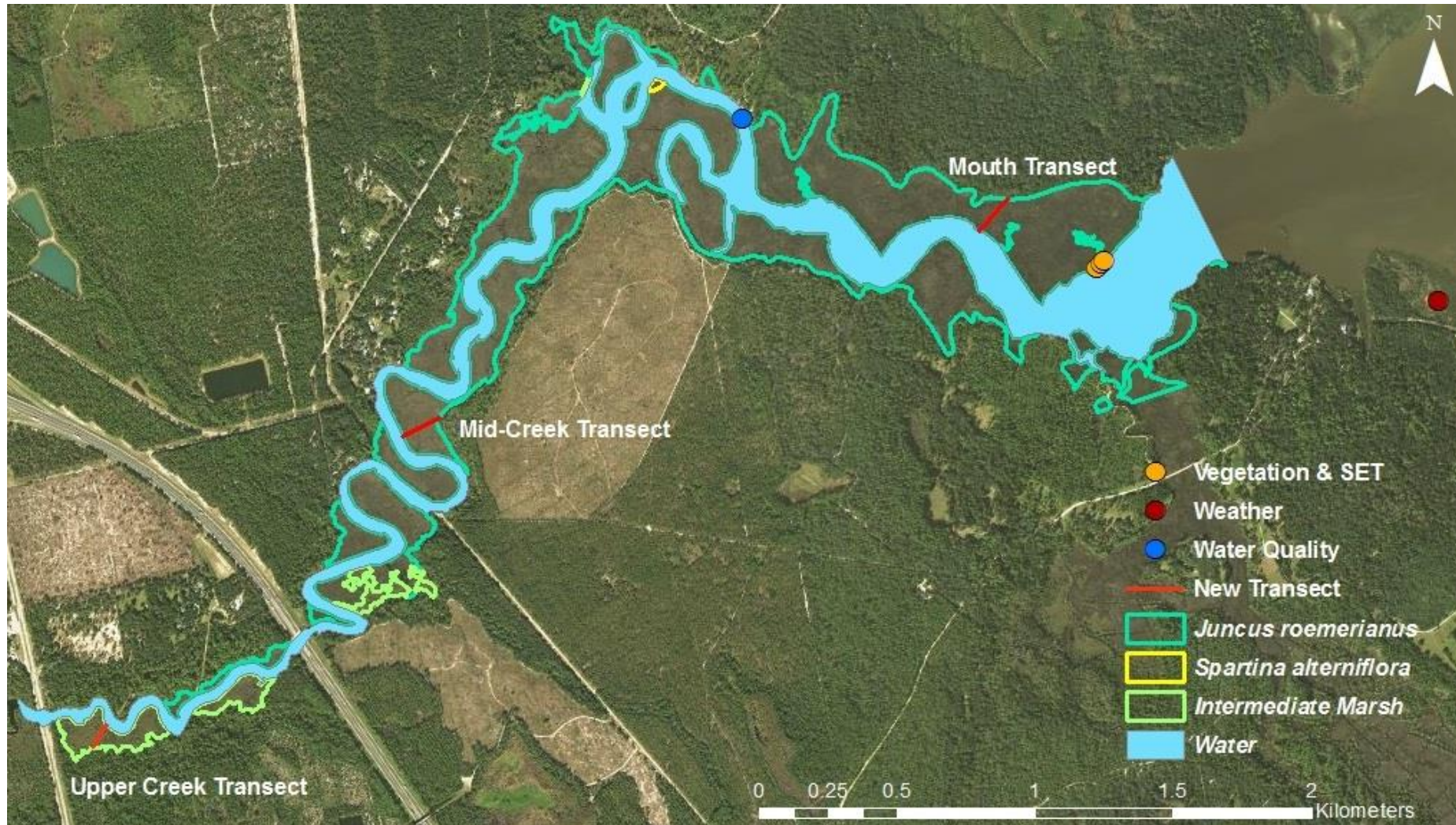


GTM SSAM-1: Site Selection





GTM SSAM-1: Site Selection





GTM SSAM-1: Implementation Plan

Sentinel Site Application Module 1:
Coastal Habitat Response
to Changing Water Levels

Implementation Plan



Guana Tolomato Matanzas
National Estuarine Research Reserve

January 21, 2020





GTM SSAM-1: Buildout

- **Vegetation**
 - Boardwalk installation
 - Vegetation plots established
- **Surface Elevation**
 - Vegetation plot elevations
 - SETs
- **Water Level**
 - Water level gauge platform installed
 - Stabilize gauge platform
 - Acquire and install water level gauge
 - Salinity/water level study
- **Vertical Control**
 - Vertical Control Network established
 - Transect Control (Survey) Marks
 - Instrument Elevations





GTM SSAM-1: Buildout

- **Vegetation**

- ✓ Boardwalk installation
- ✓ Vegetation plots established



160 m (528 ft)
14 plots



132 m (434 ft)
12 plots



155 m (510 ft)
14 plots





GTM SSAM-1: Buildout

- Vegetation
 - ✓ Boardwalk installation
 - ✓ Vegetation plots established
- Surface Elevation
 - Vegetation plot elevations
 - ✓ SETs





GTM SSAM-1: Buildout

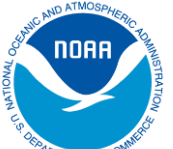
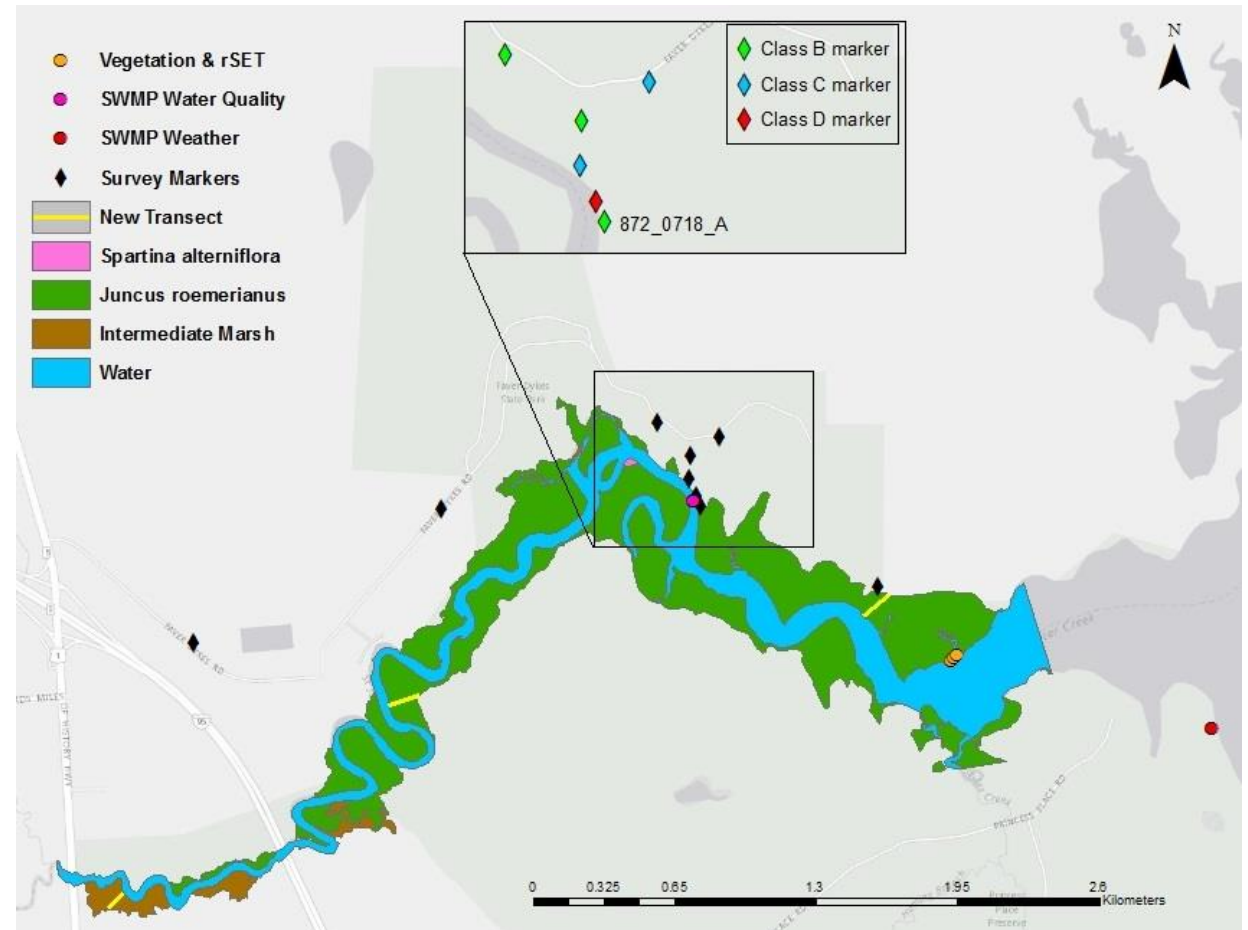
- **Vegetation**
 - ✓ Boardwalk installation
 - ✓ Vegetation plots established
- **Surface Elevation**
 - Vegetation plot elevations
 - ✓ SETs
- **Water Level**
 - ✓ **Water level gauge platform installed**
 - **Stabilize gauge platform**
 - **Acquire and install water level gauge**
 - **Salinity/water level study**





GTM SSAM-1: Buildout

- **Vegetation**
 - ✓ Boardwalk installation
 - ✓ Vegetation plots established
- **Surface Elevation**
 - Vegetation plot elevations
 - ✓ SETs
- **Water Level**
 - ✓ Water level gauge platform installed
 - Stabilize gauge platform
 - Acquire and install water level gauge
 - Salinity/water level study
- **Vertical Control**
 - ✓ Vertical Control Network established
 - Transect Control (Survey) Marks
 - Instrument Elevations





GTM SSAM-1: Buildout

- **Vegetation**
 - ✓ Boardwalk installation
 - ✓ Vegetation plots established
- **Surface Elevation**
 - Vegetation plot elevations
 - ✓ SETs
- **Water Level**
 - ✓ Water level gauge platform installed
 - Stabilize gauge platform
 - Acquire and install water level gauge
 - Salinity/water level study
- **Vertical Control**
 - ✓ Vertical Control Network established
 - Transect Control (Survey) Marks
 - Instrument Elevations





GTM SSAM-1: Monitoring

Initial Monitoring

October 2019, January 2020

26 species + 42 TBD

- Lower – 6+1 TBD
- Middle – 4
- Upper – 21+ 41 TBD





GTM SSAM-1: Monitoring

Common species

- *Juncus roemerianus*
- *Bacopa monnieri*





Thank You to Those Who Helped

Project Partners:

- Northeast Florida Aquatic Preserve
- St John's River Water Management District
- Faver-Dykes State Park
- Flagler County/Florida Agricultural Museum
- FDEP Bureau of Survey & Mapping

GTM Staff

GTM Volunteers

Mike Darragh

Remo Mondazzi

Erick Revuelta

Annie Otto





GTM Research Reserve

Pamela Marcum
Pamela.Marcum@FloridaDEP.gov
904-823-4523

Nikki Dix, Ph.D.
Nikki.Dix@FloridaDEP.gov
904-823-4519