

Florida Department of Environmental Protection



Office of Coastal and Aquatic Managed Areas

Guana Tolomato Matanzas National Estuarine Research Reserve



GTM Research Reserve

Mission Statement

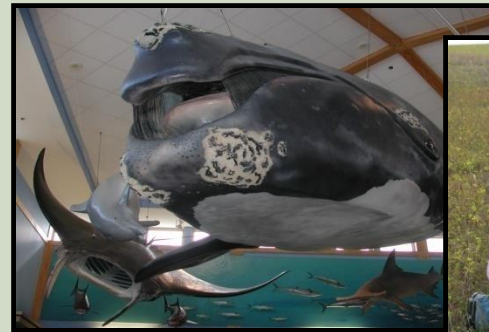
To achieve the conservation of natural biodiversity and cultural resources by using the results of research to guide science-based stewardship and education strategies.

Programs:

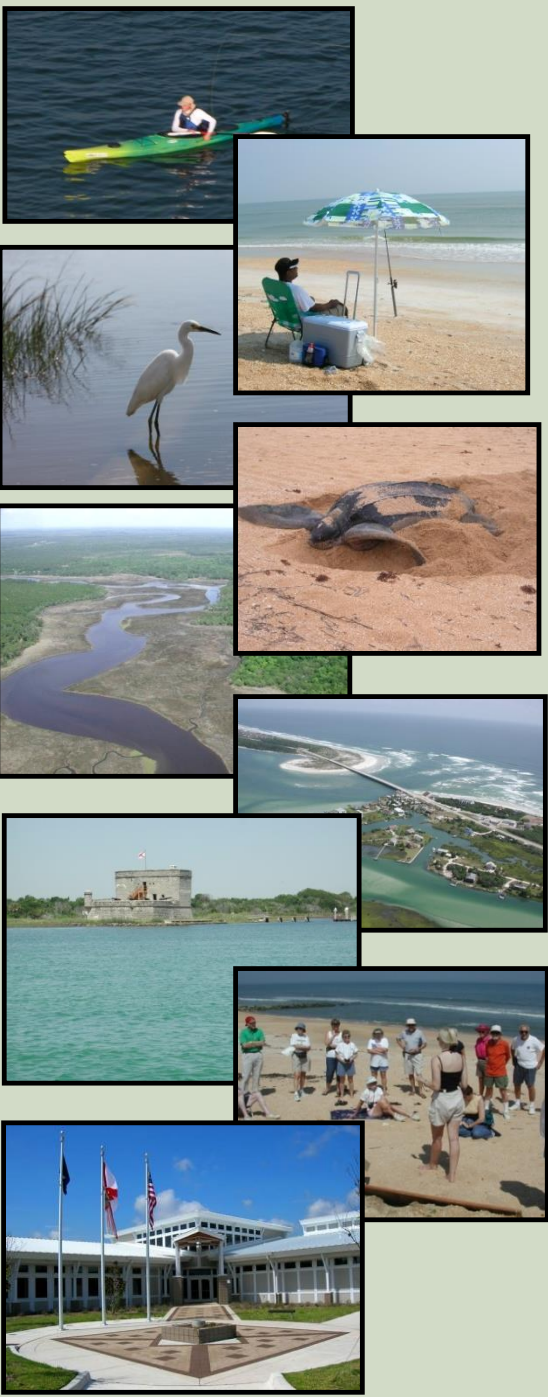
Research

*Resource
Management*

Education



***36 Paid Staff and >200 Registered Volunteers
donating more than 10,000 hours per year***



Management Focus:

Public Use

Habitat and Species Management

Watershed Land Use

Cultural Resources

Global Processes

Two Components

Approximately 73,000 Acres





62% or 45,177 acres directly managed by reserve staff

94% of this directly managed area are tidal and submerged lands





Protecting Ecosystem Services

“Ecosystem services are the conditions and processes through which natural ecosystems, and the species that make them up, sustain and fulfill human life.”

Daily, G. (ed.), 1997, *Nature's Services: Societal Dependence on Natural Ecosystems*. Island Press, Washington D.C.



Provisioning Services

Goods regenerated, produced, or provided by ecosystems

- ❖ **Water Supply**
- ❖ **Food**
- ❖ **Raw Materials**
- ❖ **Medicinal Resources**
- ❖ **Ornamental Resources**



Moderating, Supporting, and Regeneration Services

- ❖ Moderate Climate Fluctuations
- ❖ Buffer Storm Impacts
- ❖ Natural Pest and Disease Control
- ❖ Pollination and Seed Dispersal
- ❖ Water Purification
- ❖ Soil Retention
- ❖ Waste Treatment
- ❖ Nutrient Cycling



Cultural Services

Non-material benefits obtained from ecosystems

- ❖ Recreation
- ❖ Aesthetics
- ❖ Science and Education
- ❖ Spiritual and Historic

