

GTMNERR's EDUCATION SECTOR

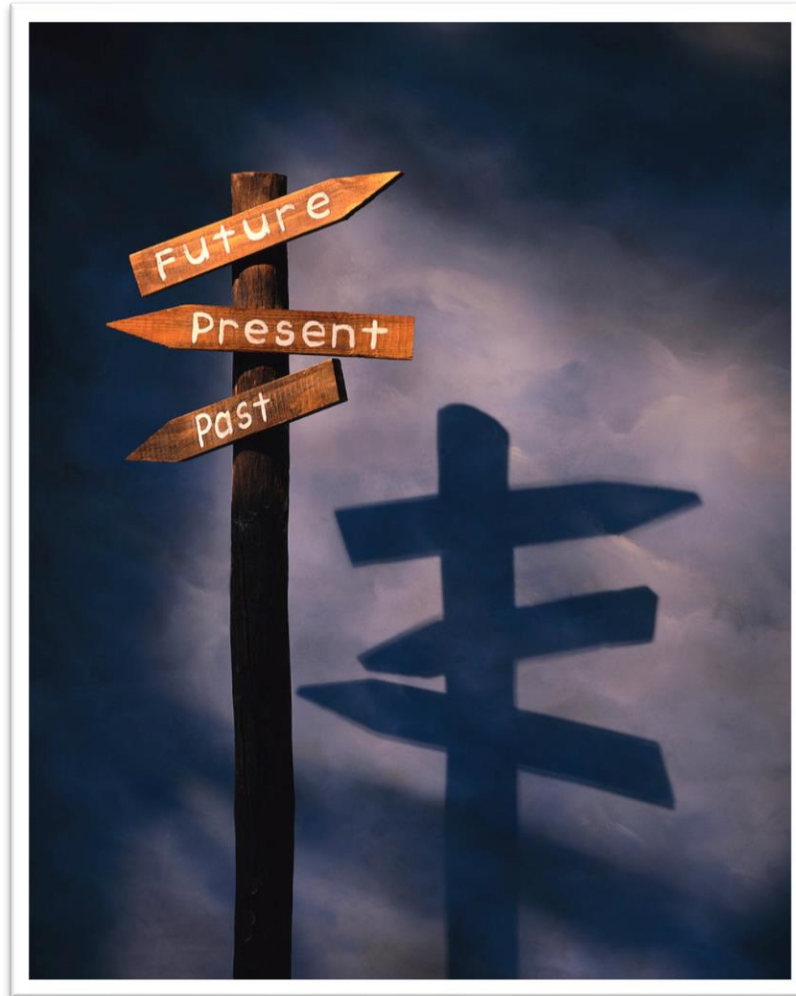
EDUCATION

LIKE THE ENVIRONMENT

DEPENDS ON THE INDIVIDUAL

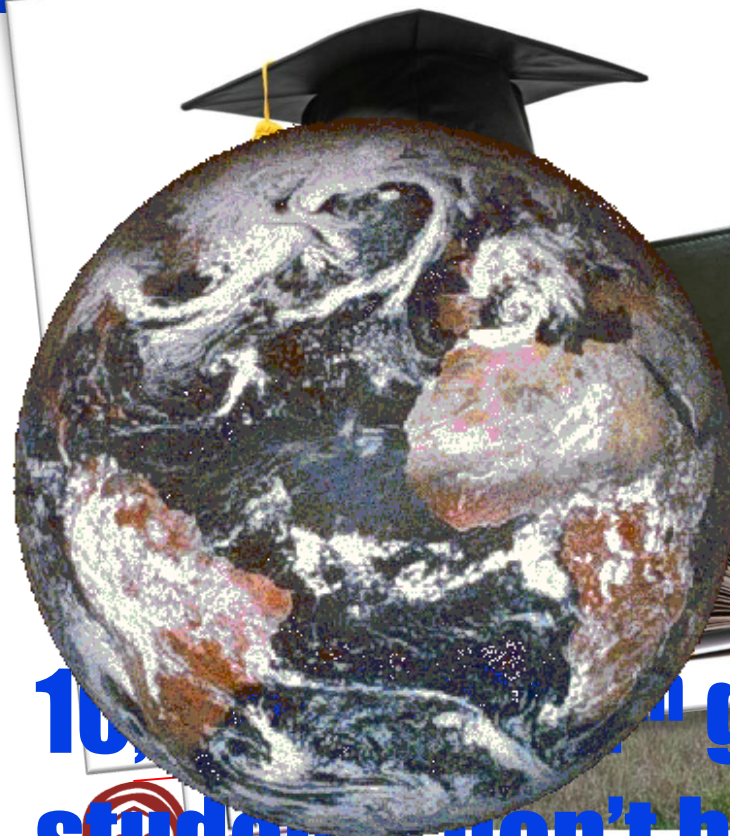


DISCUSSION POINTS



1999

1 out of 5 teachers feel
6,000,000,000+



10% of gr
students don't have

basic **CRITICAL THINKING** **innovation**

2001



&

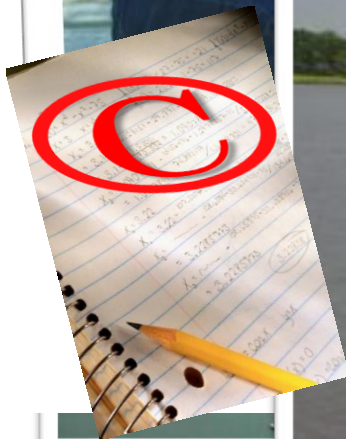


Not in labor force

Discipline

Financial Assistance

Major problems facing public schools



America's viewpoint on Education

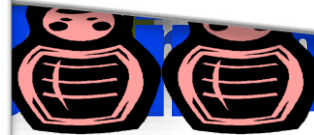
2005



GTMNERR Education



FLORIDA NIGHTS 4 0001 0 0065

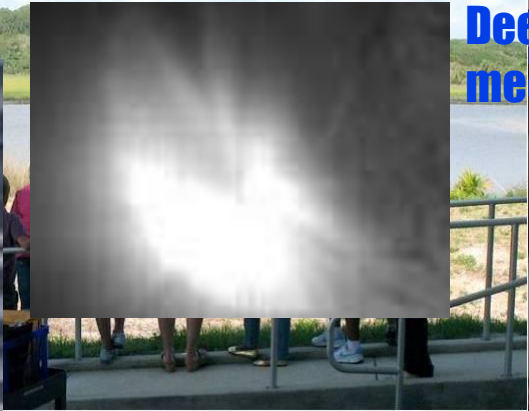


2007

Discovery



Deep
meets
animal



Space
Exploration



Voyager enters deep
space



Saturn moon explored



habitable Planet

USA NERR Education

end

2009

in **GTMNERR Education**



SIOBHA



HILARY
MAN
WO
HALL

Graveyard
Book
With illustrations by DAVI MCKEAN

The Help
a novel



K
STOCKETT

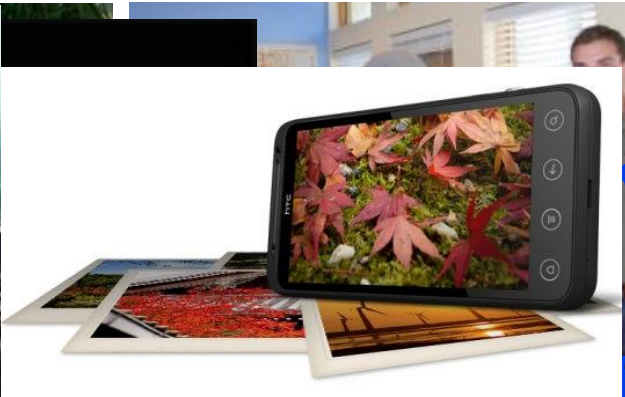
anslaught...

assault

Book

in poverty

2011



GWINNER
SOUTH
Theatrical
Cell Phone
controversion

2012



**Education
Programs**



**Education
Strategies**



**Education
Principles**

PROGRAMS

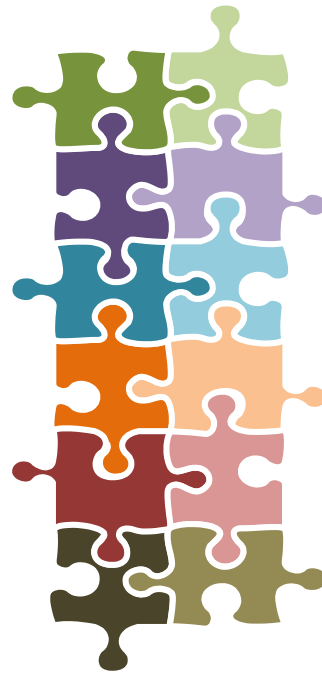
Elementary 

 **Estuary Explorers**

Middle School 

 **L.I.F.E.**

**High School &
College** 



 **Estuaries 101**

Adult 

 **Exploring our
Environment**

Community 

 **Outreach**

Teachers 

 **T.O.T.E.**

STRATEGIES

Innovative

- System-wide
- Outside Resources

No Child Left Inside

- Environmental Literacy Plan

Culturally Inclusive

- Inclusive not diverse

Educate for Human Greatness

- Driver / Motivation



PRINCIPLES

Value Positive Human Diversity

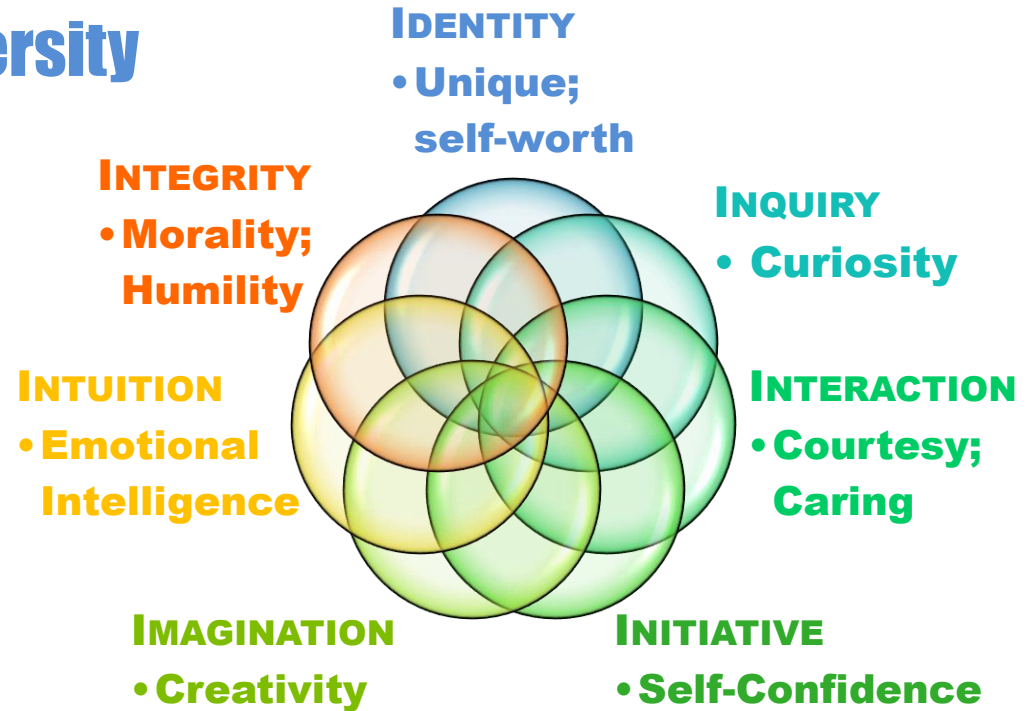
Draw forth potential

Respect Autonomy

Invite Inquiry

Support Professionalism

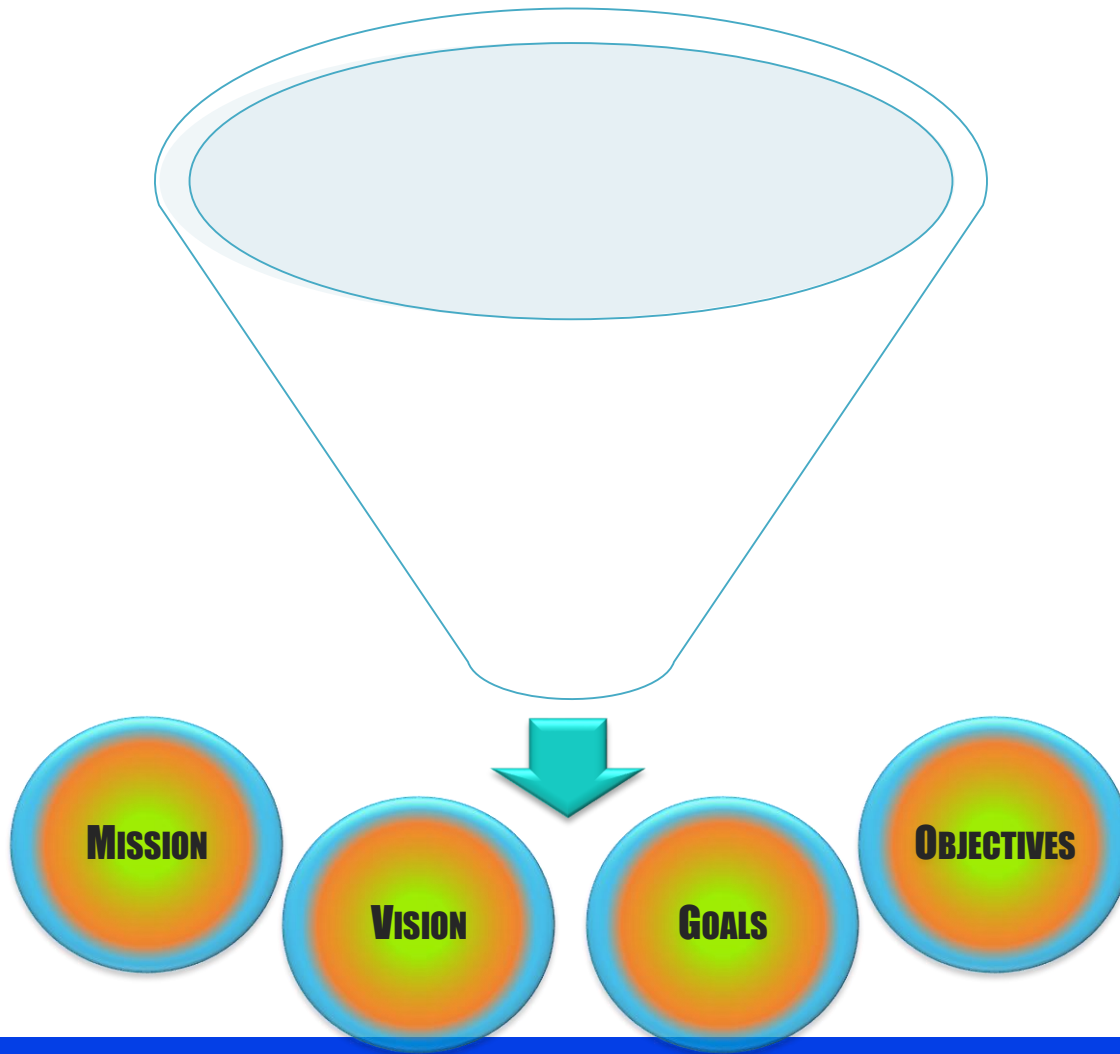
CommUNITY for Great Schools



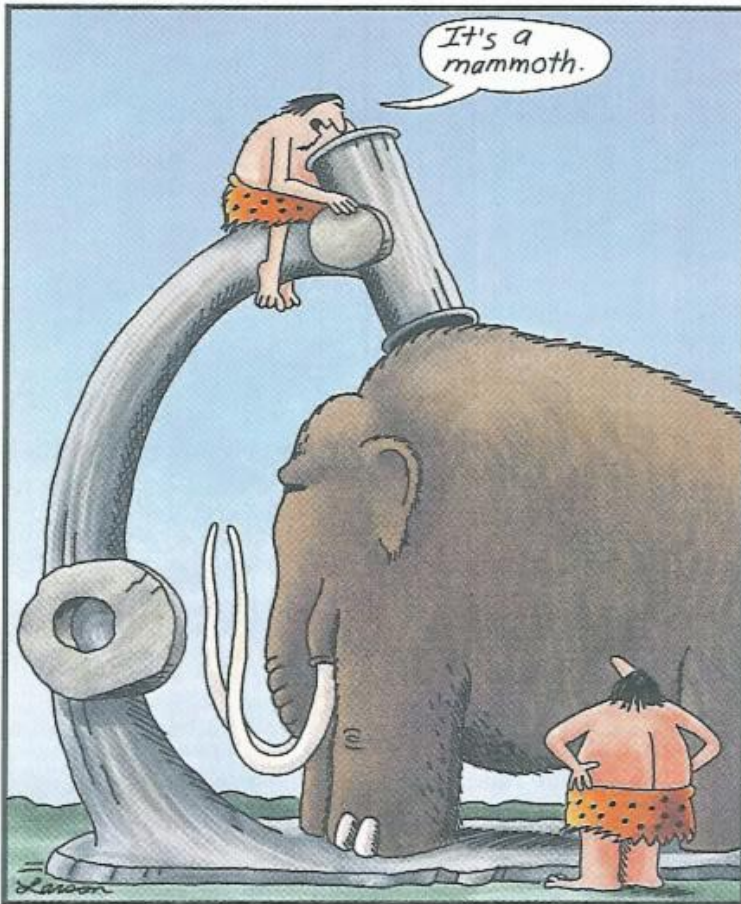
Programs

Strategies

Principles



QUESTIONS



Early microscope

“In the end we will conserve only what we love. We will love only what we understand. We will understand only what we are taught.”

– Baba Dioum

“Everybody is a genius. But if you judge a fish by its ability to climb a tree, it will live its whole life believing that it is stupid.”

– Albert Einstein