


# **Assessing coastal restoration for science and education: Meeting both objectives**

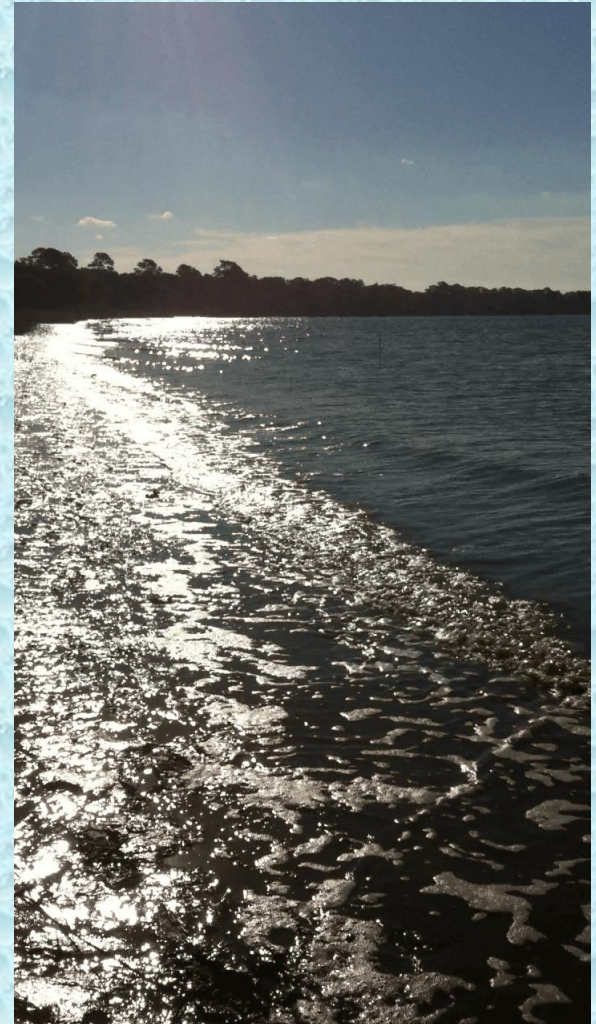


**Dr. Kelly Smith**



# Coastal systems: stressors?

- **Large scale: Sea level rise, Subsidence**
- **Local scale: Storm waves, Dredging, Wake damage**
- **Impact: coastal shift/loss**





# **What is the role of restoration ecology?**

- **Objectively assess impacted environments**
- **Identify appropriate reference and target systems**
- **Address best practices based on likelihood of success.**
- **Avoid value decisions – let policy makers focus on that! Science, not advocacy.**



# **Why is a restoration project a good system for learning?**

- **Experiential or hands on**
- **Community based, moving students out of college environment**
- **Addresses system complexity and uncertainty**
- **Problem solving approach**



# Student activities and outcomes

- **Student teams monitored biota and habitat, providing background data for upcoming restoration**
- **Developed & implemented monitoring protocols**
- **Evaluated restoration criteria**
- **Present results in public forum**
- **Attend the poster session to see results of student activities!**
- **Later groups will assess success of project**



# Fish monitoring

- Seine sampling
- Trapping
- Benthic trays





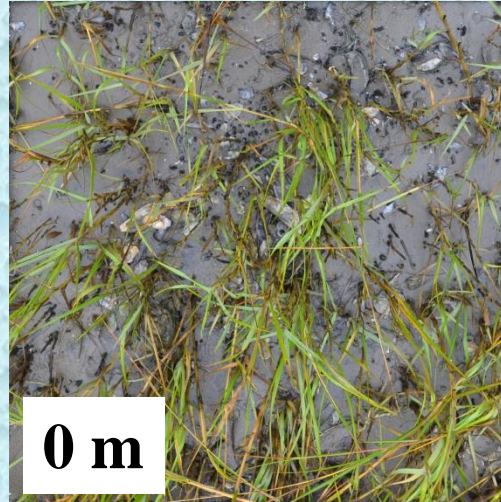
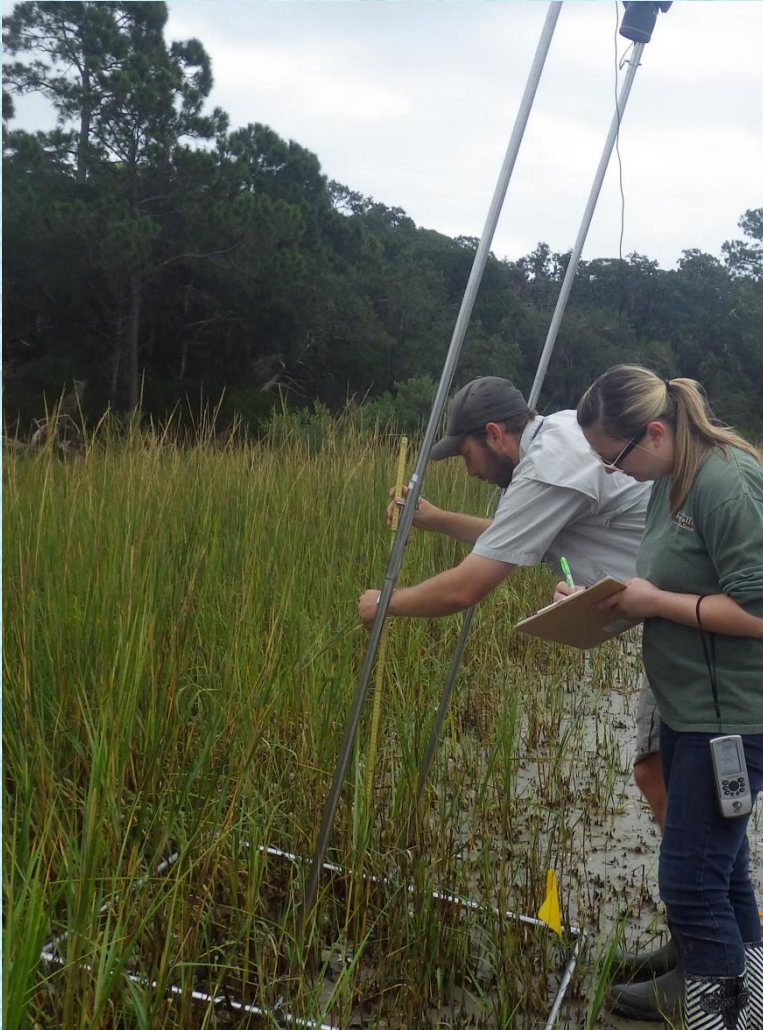
# Benthic monitoring





# Vegetation monitoring

Example: transect 4





# Experimental Living Shoreline



From Delaware Estuary Living Shoreline Initiative (DELSI)



# CROSS-SECTION Living Shoreline: Coir log and Oyster Reef Combined

MHHW

MHW

MLW

Coir log  
18" diameter

Coir mat with  
*Spartina* seedlings

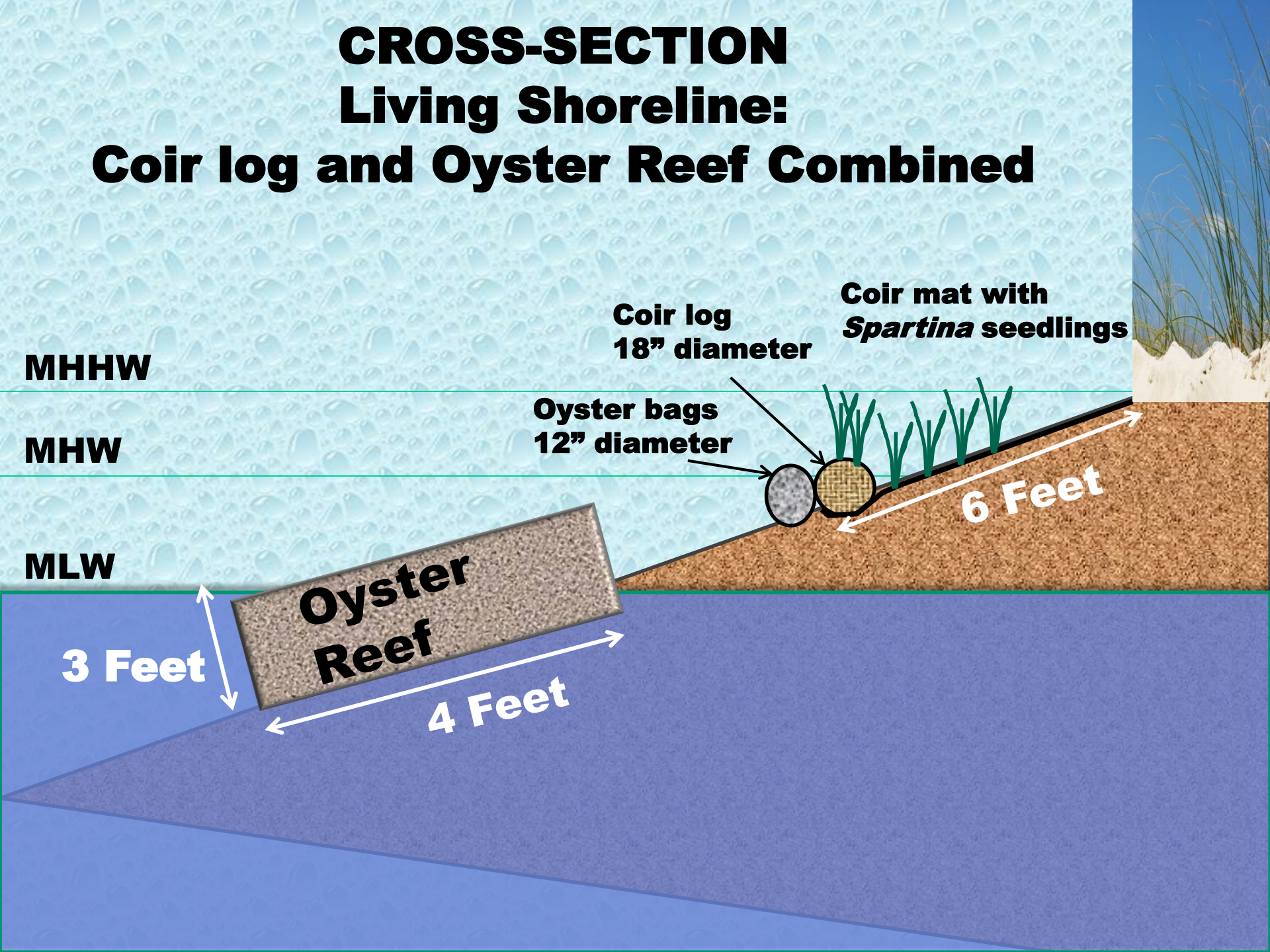
Oyster bags  
12" diameter

6 Feet

3 Feet

Oyster  
Reef

4 Feet





# Community Participation?

- **Volunteers needed!**
  - **Oyster collection & bagging**
  - **Preparing mats**
  - **Transporting materials to site**
  - **Installing reef structure**
  - **Plantings**



Gerhard 2013





# Future opportunities?

- **Monitoring response until July 2015**
- **Additional restoration opportunities?**
- **Additional plantings?**







# Acknowledgements



- **Funding for fall activities provided by the UNF Transformational Learning Opportunity Grants**
- **The UNF Coastal Biology Program for vehicles and equipment support**
- **The wonderful staff at the GTMNERR for all their assistance**
- **UNF undergraduates whose enthusiastic participation made this worthwhile.**
- **Funding for upcoming restoration provided by ACFHP through the Friends organization**





**Thank you.**

**Questions?**

