

A tale of two Hurricanes

Heritage Monitoring Scouts (HMS Florida) efforts at the
GTM Research Reserve

Emily Jane Murray and Sarah E. Miller

Florida Public Archaeology Network



Heritage Monitoring Scouts (HMS Florida)

Citizen science initiative to track site impacts, threats and changes, especially those threatened by climate change and coastal erosion



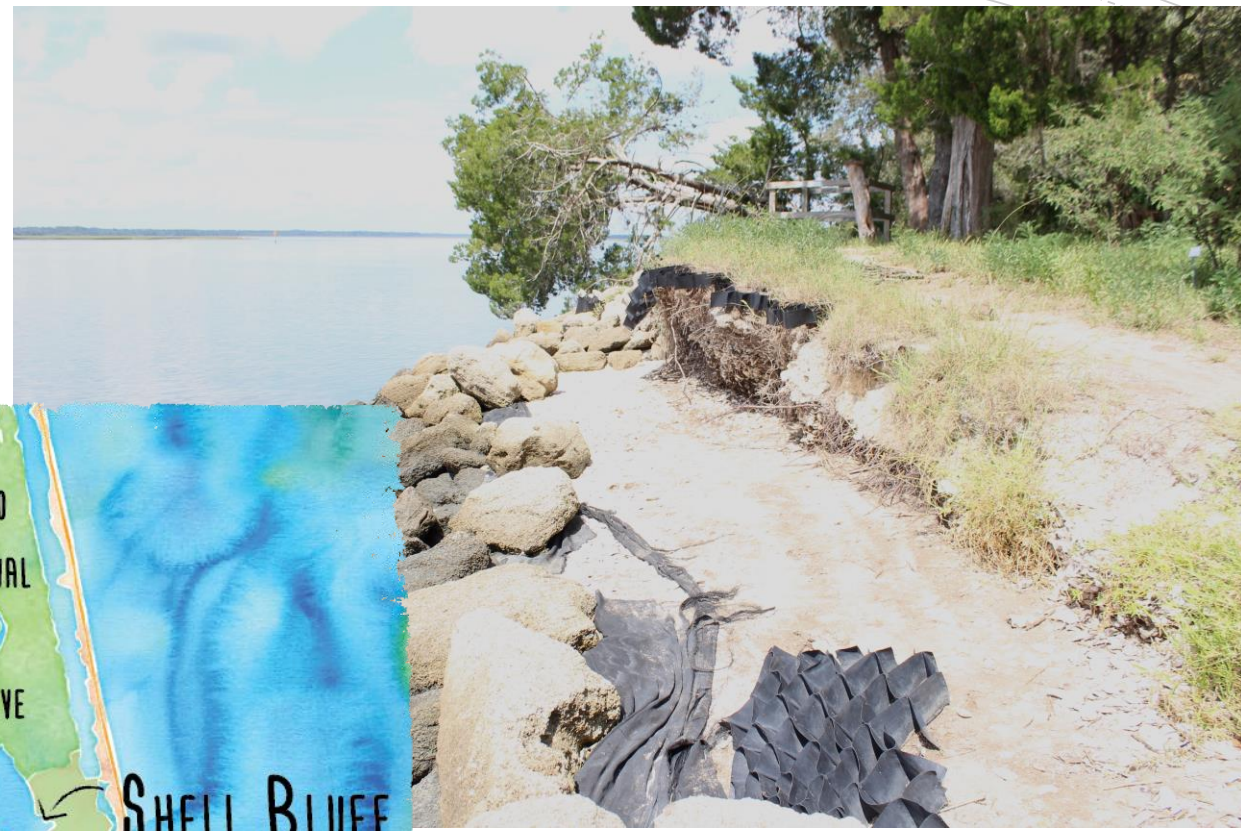
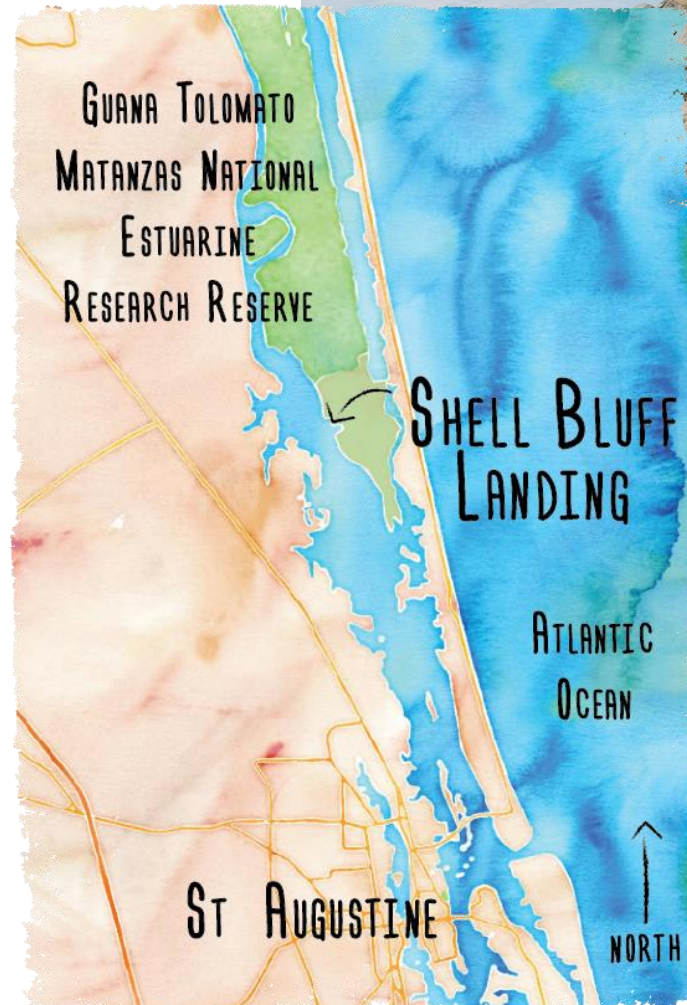
Scout Trainings

Classroom skills with artifacts

On-site monitoring



Shell Bluff
Landing
(8SJ32)



Site Components

Shell Midden

Minorcan Well



Erosion at Shell Bluff Landing



Erosion at Shell Bluff Landing

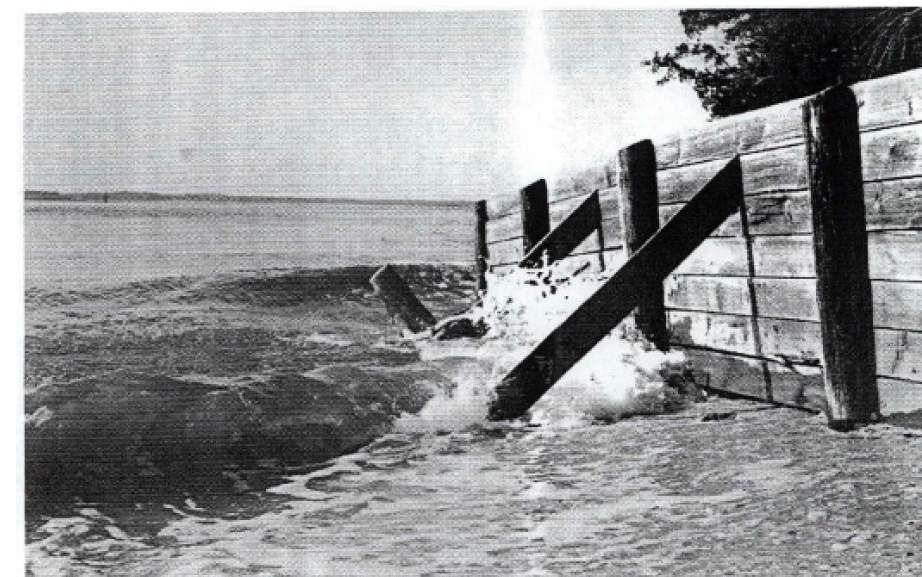
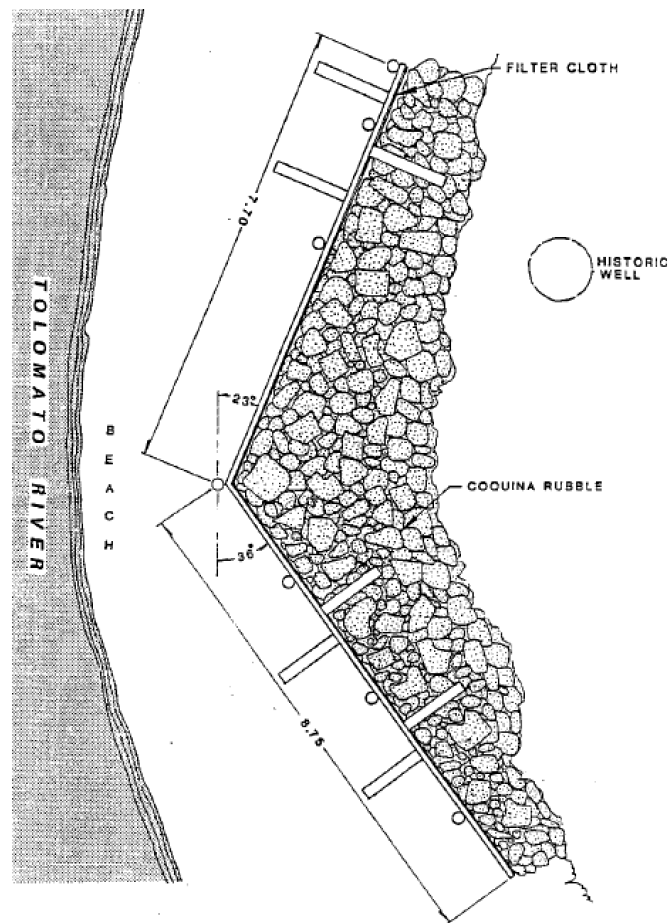


Erosion Control Efforts

Bulkhead

Erosion study and Monitoring

Riprap and Geowebbing



July 2005



Erosion Control Efforts

Bulkhead

Erosion study and Monitoring

Riprap and Geowebbing



September 2016

Hurricanes

Matthew, October 7, 2016

Irma, September 10, 2017

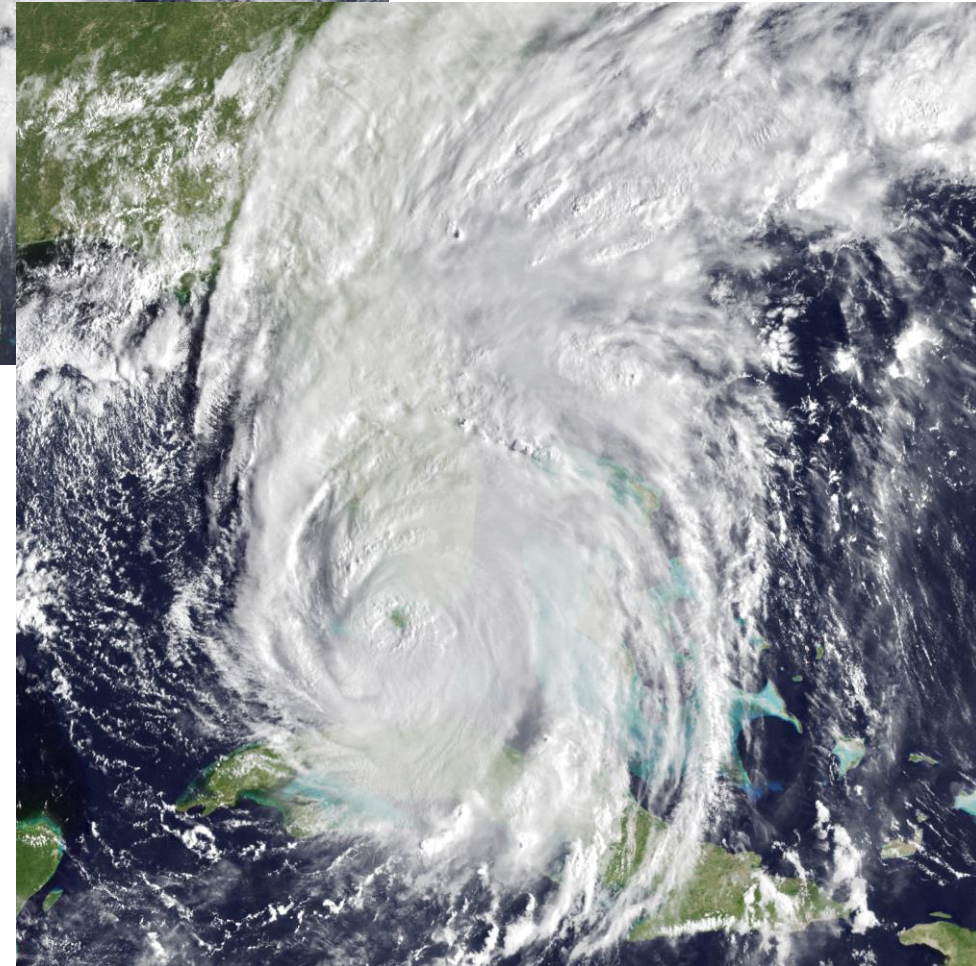
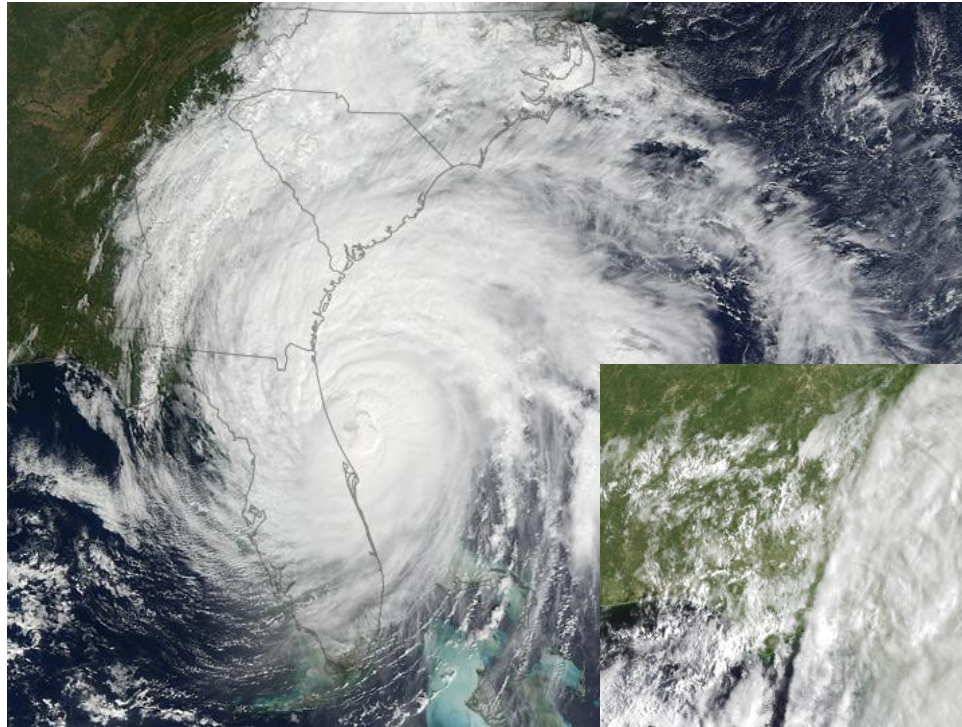


Photo Credit: NASA

September 28, 2016



October 12, 2016



September 15, 2017



September 20, 2017

Minorcan Well

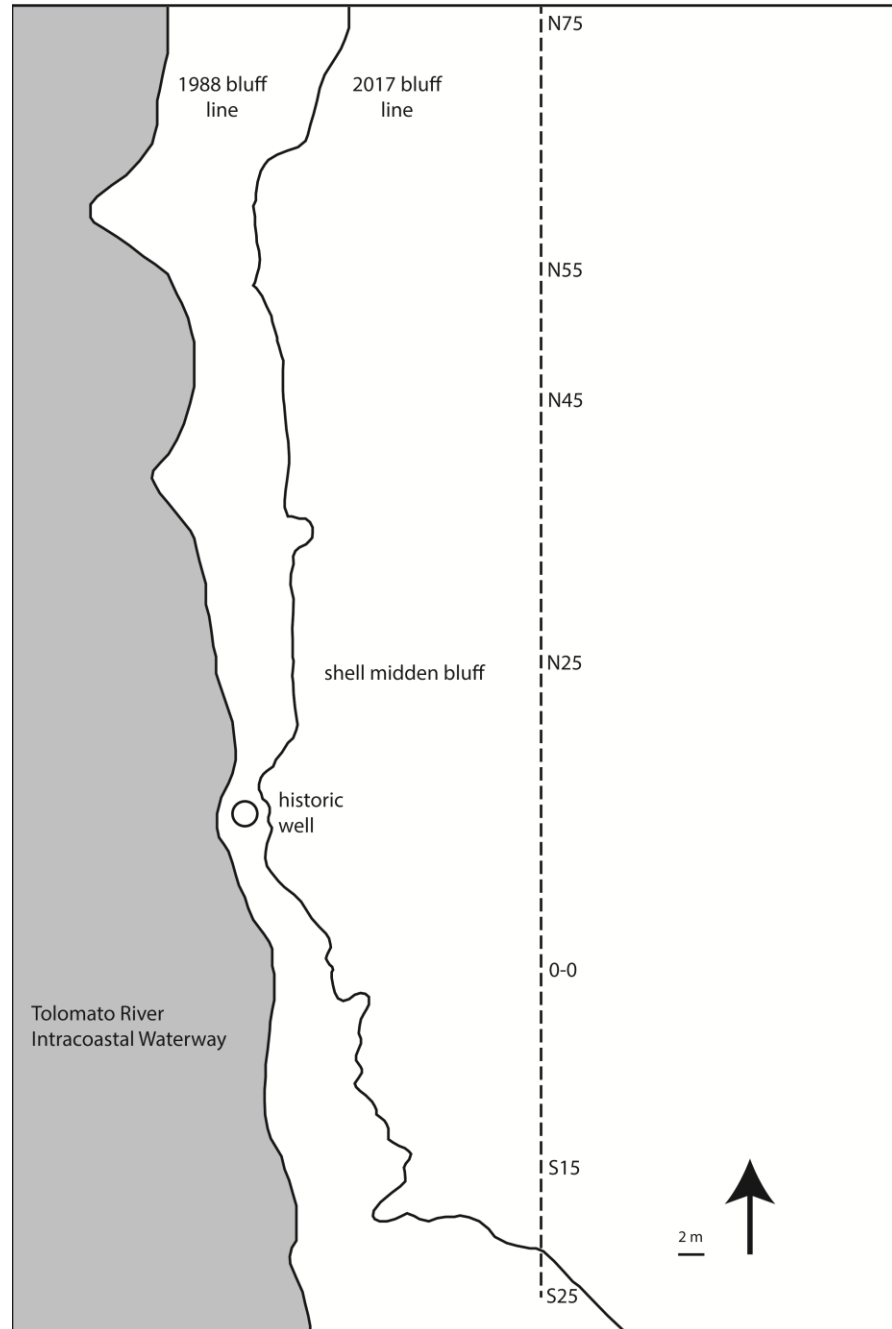


Artifact Assemblage



Erosion at Shell Bluff Landing (8SJ32) Bluff Line, 1988-2017

Comparison with 1988 Survey



Site Sampling

December 2017



Future plans?
Continued monitoring
More documentation
More archaeology?



Acknowledgements

- Kaitlyn Dietz, Tina Gordon, Michael Shirley, Joe Burgess, Cheryl Mannel, and all of the GTM Research Reserve staff
- All of the HMS Florida Scouts who were a part of the pilot program
- Jason O'Donoughue and the staff at Florida Bureau of Archaeological Research
- Our colleagues at FPAN across the state who have contributed to the HMS Florida program
- Chris Newman

The background features several thin, curved lines in shades of gray, some solid and some dashed, creating a sense of motion or a network. On the left side, there is a large orange speech bubble with a white outline, containing the text 'Contact Information'.

Contact Information

Emily Jane Murray

Public Archaeology Coordinator

Florida Public Archaeology Network

Flagler College

904-392-7874

EMurray@flagler.edu